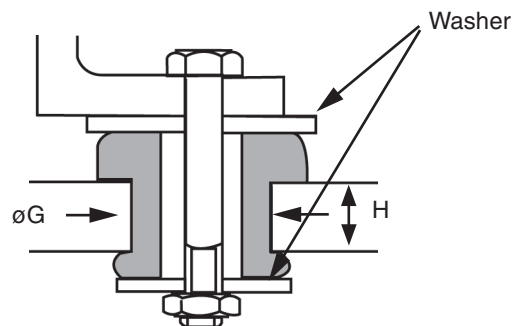
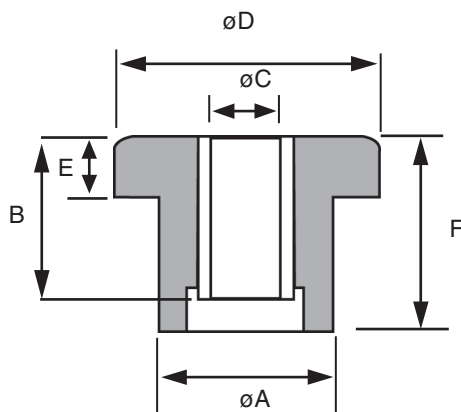


## DUAL COMPRESSION MOBILE ISOLATORS

The Mackay dual compression mobile isolators have been engineered to isolate vibration, control shock and reduce noise due to structure borne vibrations. They have high load carrying capacity with improved multi-directional resilience and built in rebound protection.

The isolators give versatility for protecting the equipment and improving operator comfort for all types of cabins and vehicles. Their engineered design balances stability with resilience to withstand high static and shock loading as well as providing fail safe assembly when installed with suitable washers.

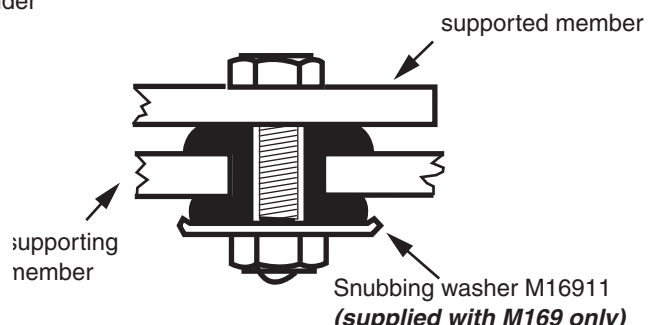
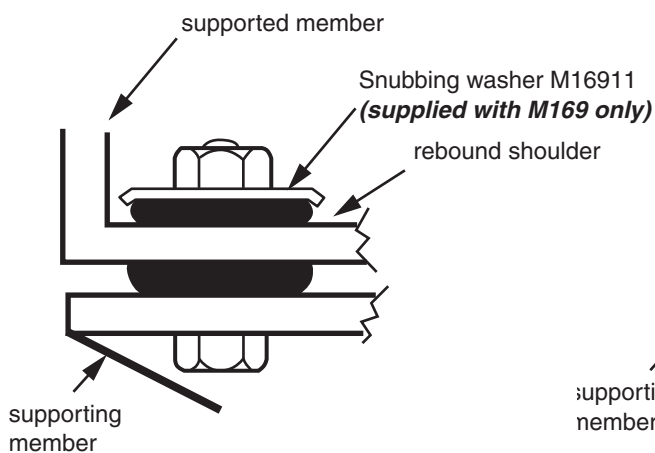


\* H : Thickness of supporting member

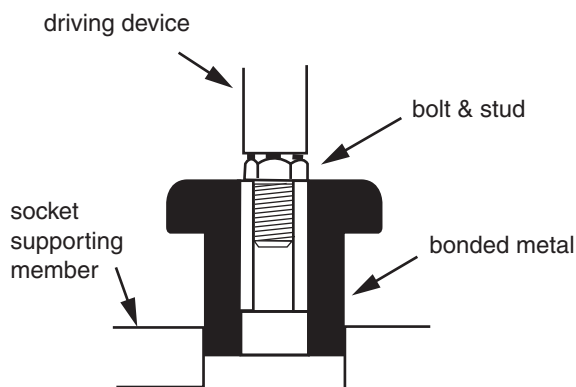
Part No.	A	B	C	D	E	F	G	H	WEIGHT Kg
M539887	20.6	17.5	10	27.7	5.6	20	20.6	8	0.02
M539190	31.5	25.4	13	44.5	10.4	32	31.5	10	0.05
M539886	34.3	35	13	50.8	13.5	42	34.3	16	0.08
M169	34	35	16	50	13	41.2	34	16	0.1
M187	41	44.5	13	63	22	51	41	16	0.2
M539191	41.1	44.5	16	63.5	15.7	51	41.1	19	0.2
M539951	56.6	50.8	20	95	25.4	62	56	20	0.4

ALSO AVAILABLE ; M189 MECHANICAL & CHEMICAL PROTECTION SHIELD.

### METHODS OF MOUNTING



Part No.	DURO	COLOUR CODE	LOAD RANGE Kg	NOMINAL DEFLECTION mm
M53988745	45	White	8 - 35	0.7
M53988760	60	Green	10 - 50	0.7
M53919045	45	White	15 - 75	1.2
M53919060	60	Green	25 - 100	1.2
M53919160	60	Green	60 - 250	2
M53919175	75	Blue	125 - 500	2
M53988660	60	Green	35 - 150	1.2
M53988675	75	Blue	80 - 330	1.2
M53995145	45	Marked 45	175 - 700	3
M53995165	65	Marked 65	250 - 1000	3
M16940	40	Red	100	1.5
M16950	50	Yellow	150	1.5
M16960	60	White	250	1.5
M18740	40	Red	200	3.3
M18750	50	Yellow	200	2.3
M18760	60	White	200	1.4
M18770	70	marked 70	500	2.3



\* **INSTALLATION NOTE:** Tighten nut to pull mounting bracket and snubbing washer firmly against inner member.

## INSTALLATION IS SIMPLE

1. Both the isolator and the socket should be lubricated with water.
2. Insert part in socket and rotate by hand , while applying axial force until partially positioned. Insert driving bolt , stud or assembly fixture in the metal inner member of the mounting. Care should be taken that the driving device does not overhang the outside diameter of the inner member in order to prevent damage to the Elastomer.
3. Apply pressure to the driving device to seat the mounting in its socket.
4. Assemble the other elements of the support , insert the mounting bolt and tighten by applying the required torque. When the nut is tightened against the snubbing washer , the rebound shoulder is formed automatically. The resulting pre-compression will ensure optimum performance.