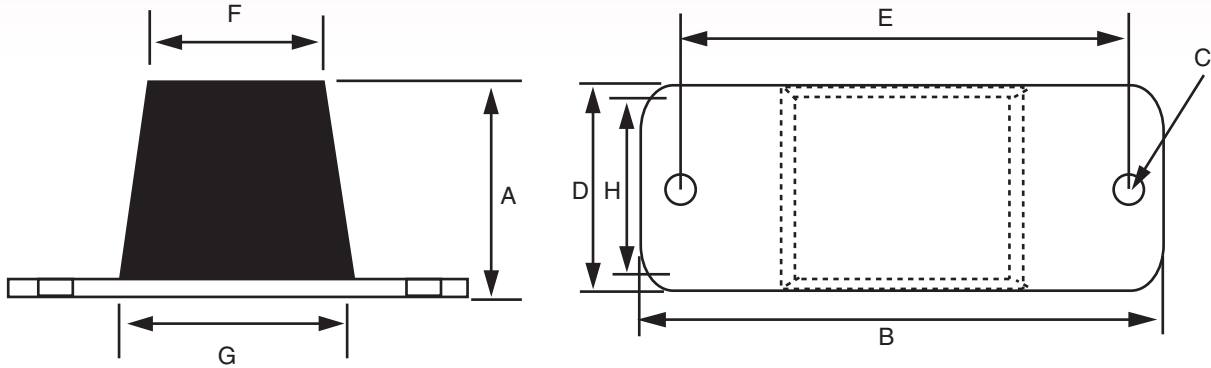
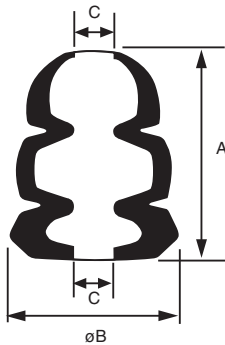


## BONDED BUFFERS



Part No.	A	B	C	D	E	F	G	H	STATIC LOAD Kg	DEF mm	BUFFING LOAD Kg	DEF mm	Weight Kg
M176	73	127	10	44	101	51	76	32	87	10	200	20	0.3

### \*Two Hole Mixing



PART No.	A	B	C	Static Load Kg	DEF mm	Buffing Load Kg	DEF mm	Weight Kg
M190	103	79	20	150	25	450	45	0.3

## FEATURES

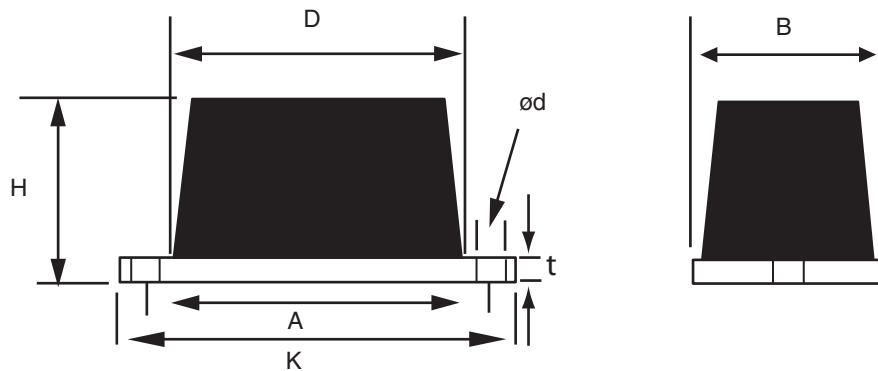
This rectangular buffer is easily fitted. Reduction of transmitted shock loads enables equipment to be designed more economically.

This buffer is designed to protect structures and equipment from impact forces. It is usually fitted as non-metallic stops or incorporated in vehicle suspension systems to provide progressive stiffening under increasing load.



Typical applications:

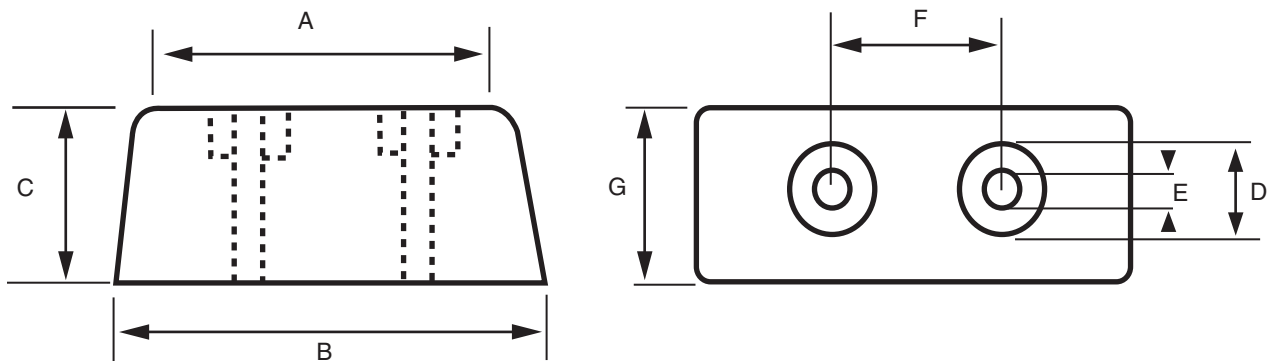
- Dump trucks
- Off-road vehicles
- Cranes
- Handling equipment
- Vehicle suspensions



Part No	Dimensions							Compression		Weight Kg
	A	B	D	H	K	d	t	Load Kg	Def mm	
M15260	127	64	89	37	156	13.5	6.3	250	13	0.6

## MOULDED DOCKING BUFFER

Ideally suited to truck trays and loading bays



Part No.	A	B	C	D	E	F	G	Weight Kg
DB15090	145	150	90	40	13.5	75	76	1.2
DB15575	150	155	75	36	14	87	65	0.72
DB19555	185	195	50	32	11	120	55	0.62