

SINGLE V-SHAPED (SMALL ENGINE)

DESCRIPTION

The V-shaped Generator supports are comprised of two symmetrically-tilted metal parts with a screw on each side.

TECHNICAL CHARACTERISTICS

The V-shaped generator mounts render it possible to make installations which are more elastic than the ones usually made with cylindrical or bobbing mounts. This makes it possible to achieve lower frequency and consequently better vibration isolation.

Stability is enhanced when two are installed, symmetrically opposed. See fig. 1.

They have two different length screws which facilitate the assembly of the the engine to the chassis.

They have two “anti-turn” tabs which stop the mount from turning when strong tightening torque is applied (very frequently) with pneumatic tools.

They are supplied in 2 hardnesses to adapt to different load ranges.

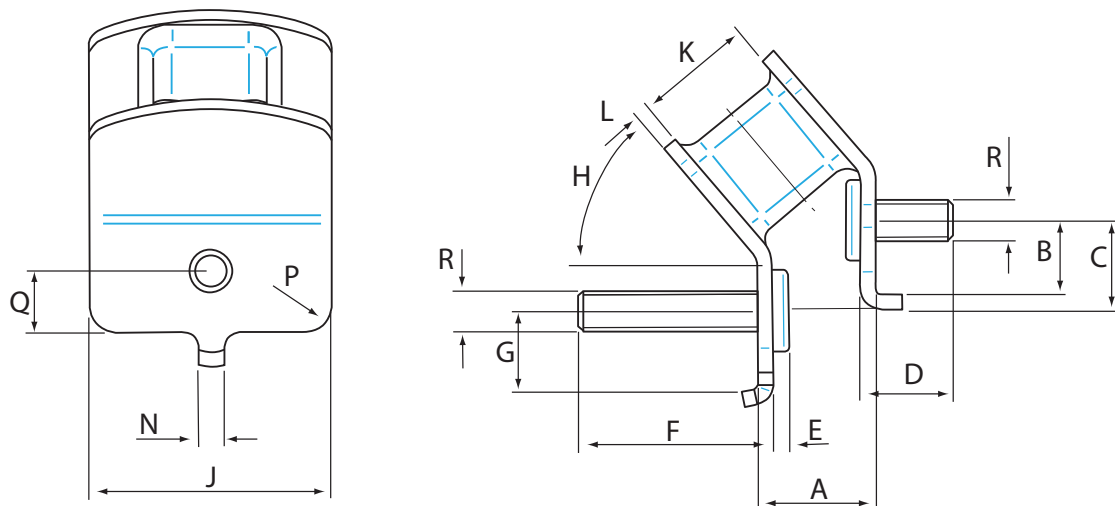
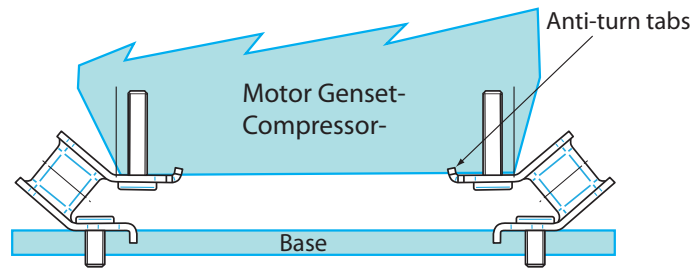
They provide vibration attenuation of above 90% in diesel or petrol single-cylinder engines running at 3000 rpm.

APPLICATIONS

Very low-load engines requiring high levels of isolation. Portable gen sets, compressors, motor pumps...



Fig 1



Part No.	Duro	A	B	C	D	E	F	G	H	J	K	L	N	R	P	Q	Load Kg	Static Deflection mm	Weight Kg
M148151	45	23	14.5	18	18	3	38	15.9	50°	47	23	3	5	M8	5	11	5	5	0.1
M148153	60	23	14.5	18	18	3	38	15.9	50°	47	23	3	5	M8	5	11	15	5	0.1
M148171	45	28	19.5	23	18	3	38	20	50°	54	31	3	7	M8	10	16	43	9	0.2
M148173	60	28	19.5	23	18	3	38	20	50°	54	31	3	7	M8	10	16	90	9	0.2