

## MOBILE TWO PIECE ISOLATOR

### DESCRIPTION

The Mobile Two Piece isolator is made of two parts of elastomer bonded to a central tube.

- Interior reinforced : cylindrical tube
- Elastomer: Neoprene. Range of three different stiffnesses.

### OPERATION

The design of the Mobile Two Piece isolator gives the following basic characteristics.

- Elastomer element resistant to oils.
- Absorb vibrations and reduce noise in all directions.

### ADVANTAGES

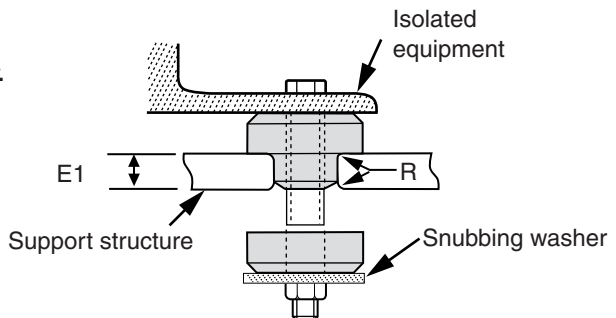
- Good isolation against structural noises.
- Neoprene resistance to oils, most solvents and ozone.
- Simple and economical
- Simple to fit
- Four sizes for load capacity under axial loads from 18-953Kg
- Anti-rebound effect when it is assembled with a washer.



### APPLICATIONS

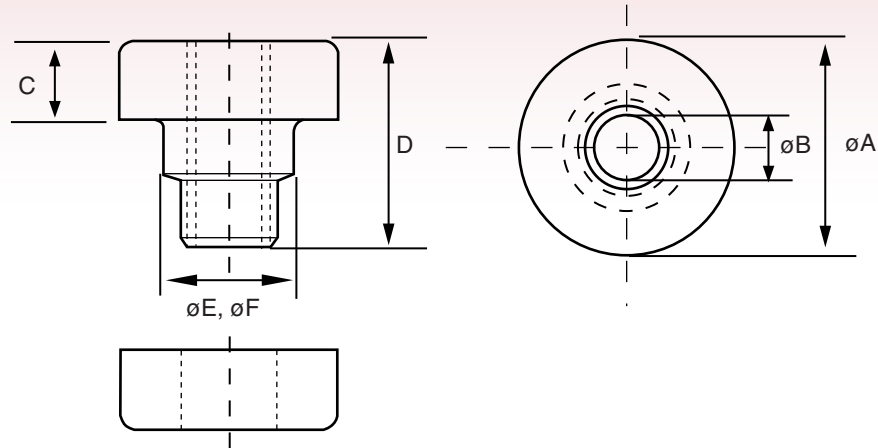
Mobile Two Piece isolator can be used in static or mobile applications , such as:

- Pumps
- Compressors
- Generators
- Electronic equipment
- Engines
- Transmissions
- Plant cabs
- Radiators



Part No.	Colour Code Neoprene	Duro	Support plate details		Load per isolator		Bolt Information		
			E1 (mm)	R (mm)	Load Kg	Def mm	Size mm	SAE Grade	Max (Nm) Torque
M83090311	red	40	9.5	1	18	1.2	9	5	40
M83090313	white	60	9.5	1	64	1.3	9	5	40
M83090315	"75" in silver pen	75	9.5	1	136	1.6	9	5	40
M53090321	red/white	40	14.3	1.5	59	1.9	13	8	162
M53090323	green/white	55	14.3	1.5	109	2.1	13	8	162
M53090325	purple/white	75	14.3	1.5	286	2.4	13	8	162
M53090331	red/white	40	22.2	2.3	95	2.3	16	8	298
M53090333	green/white	55	22.2	2.3	222	2.5	16	8	298
M53090335	purple/white	75	22.2	2.3	604	2.9	16	8	298
M53090341	red/white	45	28.6	3	123	2.7	22	8	813
M53090343	green/white	55	28.6	3	350	3	22	8	813
M53090345	purple/white	75	28.6	3	953	3.5	22	8	813

# VIBRATION ISOLATORS



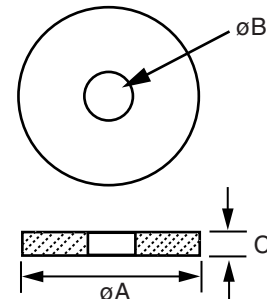
E: ø Isolator  
F: ø Mounting Hole  
D: Free Height

Part No.	øA mm	øB mm	C mm	D mm	øE mm	øF mm	Weight Kg
M83090311	33.2	10	12.3	31.7	20.1	19	0.04
M83090313	33.2	10	12.3	31.7	20.1	19	0.04
M83090315	33.2	10	12.3	31.7	20.1	19	0.04
M53090321	47.7	13.5	19.8	49.2	33	31.7	0.14
M53090323	47.7	13.5	19.8	49.2	33	31.7	0.14
M53090325	47.7	13.5	19.8	49.2	33	31.7	0.14
M53090331	64.8	16.7	22.8	61.7	40.1	38.1	0.31
M53090333	64.8	16.7	22.8	61.7	40.1	38.1	0.31
M53090335	64.8	16.7	22.8	61.7	40.1	38.1	0.31
M53090341	88.9	23.8	25.4	73.1	58.4	57.1	0.67
M53090343	88.9	23.8	25.4	73.1	58.4	57.1	0.67
M53090345	88.9	23.8	25.4	73.1	58.4	57.1	0.67

Snubbing washers are recommended for the assembly of the isolator. They ensure correct static and dynamic loading of the isolator and protection of suspended equipment under shock loads.

## SNUBBING WASHER SIZES

To Suit Isolator Part No.	øA mm	øB mm	C mm
M83090311-15	39.6	10.3	2.2
M53090321-25	54.1	13.5	3.4
M53090331-35	71.3	16.7	4.7
M53090341-45	98.5	23.8	6.3



Note: Snubbing washers are not supplied by Mackay Consolidated Industries.  
The Standard material should be low-carbon steel