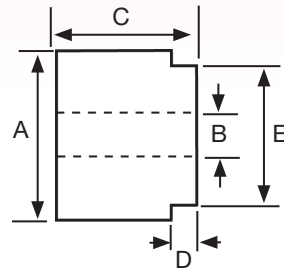
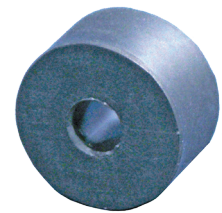
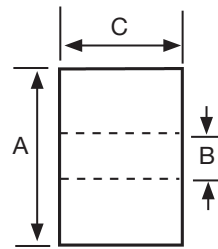


## MISCELLANEOUS BUSHES

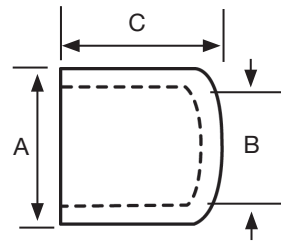
Part No.	A	B	C	D	E	DURO	Weight Kg
A775	32.5	9.0	20.5	3.5	16.1	70	0.02
A755	25.7	9.0	18.5	3.5	14.6	75	0.01
A1032	31.5	12.5	15.0	1.5	19.5	50	0.01
A1169	37.4	9.1	18.0	1.6	13.5	65	0.02
A1015	23.7	9.5	7.4	1.5	12.0	65	0.0002
A950	27.0	10.5	22.5	5.0	20.5	75	0.02



Part No.	A	B	C	DURO	Weight Kg
A1226	29.9	10.0	15.5	70	0.015
A1312	21.5	7.5	14.5	70	0.005
A92	25.2	9.5	16.3	60	0.005

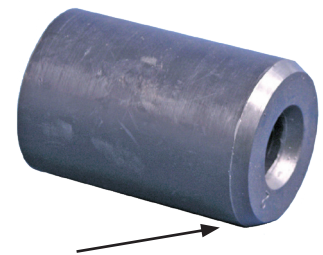


Part No.	A	B	C	DURO	Weight Kg
BC13	19.5	13	32	70	0.01
BC16	23.5	16	36	70	0.01
BC19 Replaces A1421	25	19	26	70	0.01



Part No.	Nominal dimensions			Description	Duro	Weight Kg
	A	B	C			
T604	71.0	28.0	107	All Rubber Bush	90	0.5
T604TD	71.0	23.0	100	(Nitrile)	90	0.5

**T604**



Chamfered End

**T604TD**

